

Installation and maintenance instructions

Switch controller TST280X

Operating principles

Switch Controller TST28XX enables a simple arrangement where the centrally supplied emergency luminaires can be used for general lighting in normal mode. An ordinary light switch or a timer controls the luminaires. TST28XX is compatible with all Teknoware central battery systems with 230V output, and it can be used together with the Local Controller as well.

In normal mode the luminaires take their supply from the light switch in TST2800/1 models. In TST2802/3 models supply to the luminaires is taken from central battery unit output circuits. When the central battery unit turns to emergency mode, the emergency luminaires are automatically switched over to emergency supply, regardless of the position of the light switch. The same applies also when the Local Controller sends an information of a local supply failure.

Switch Controller also has a dimming control output, which can be used to dim the light during emergency mode. The control output is compatible with electronic ballasts having a 1-10V dimming control input according to IEC 60929.

Installation

TST2801/3 includes a box enclosure for independent installation. TST2800/2 should be installed inside some suitable device such as a distribution board.

TST2801/3

Bring the cables inside the casing and connect the cables to the connectors. The casing must be grounded. The casing has a ground terminal for 2 x 2,5mm wires. Other connections are to be made according to the wiring diagram and the markings on the sticker. The strain relief is made by tightening the cable ties around the grommets.

TST2800/2

This model is meant to be installed inside a distribution board or in some other similar location. Connect the earth wires straight to the grounding terminal of the Switch Controller. The rest of the connections are made according to the wiring diagram and the markings on the sticker.

Maintenance

Maintenance is done together with the normal maintenance of the emergency lighting system. The Switch Controller doesn't need any separate check or maintenance.

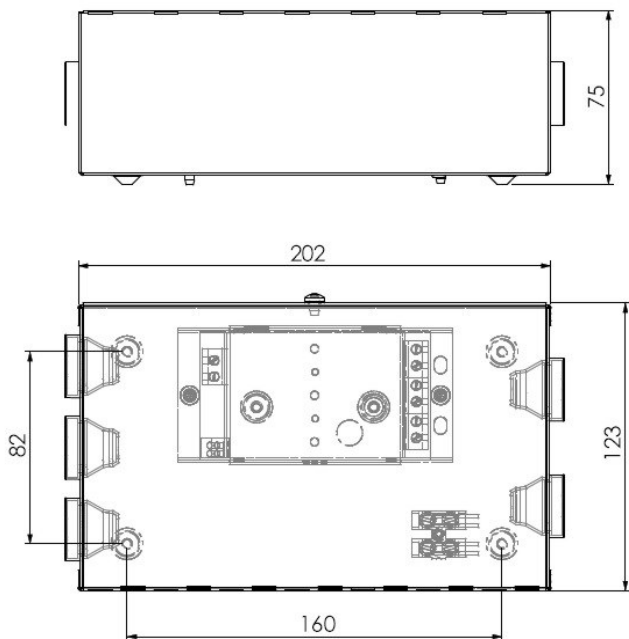
Removing from usage

Metal parts are aluminium or steel waste. Wirings, circuit boards and electronic components are electronic waste. Plastic parts are recycled according to the separate material markings.

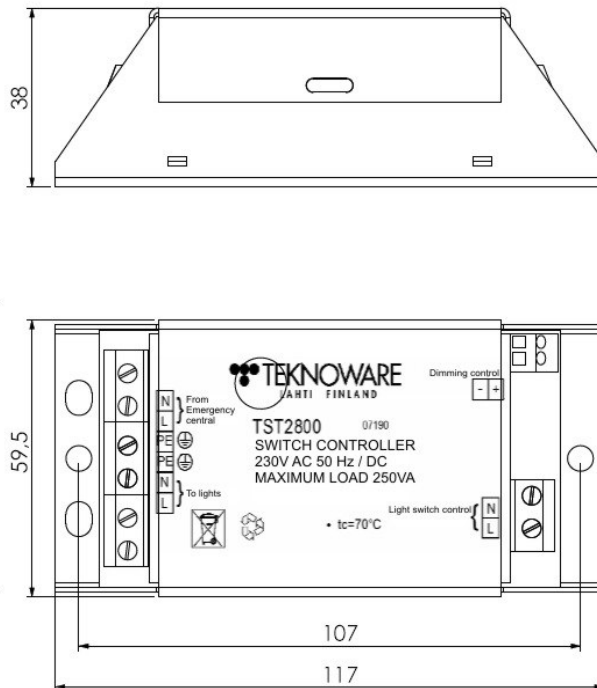


Mechanical dimensions

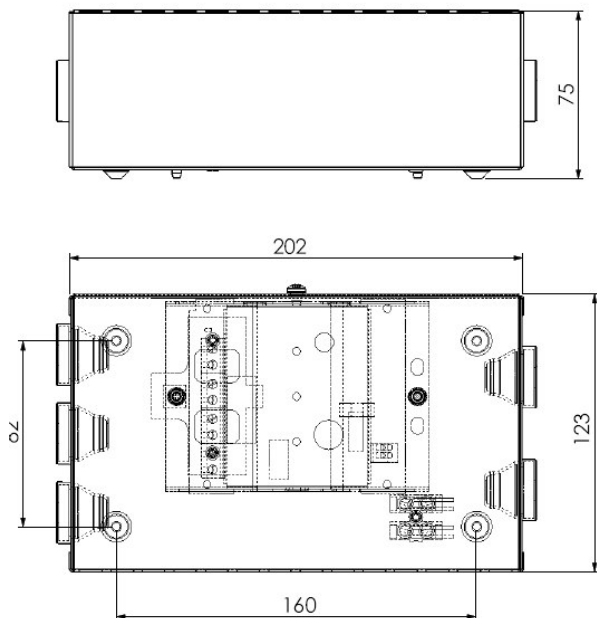
TST2801



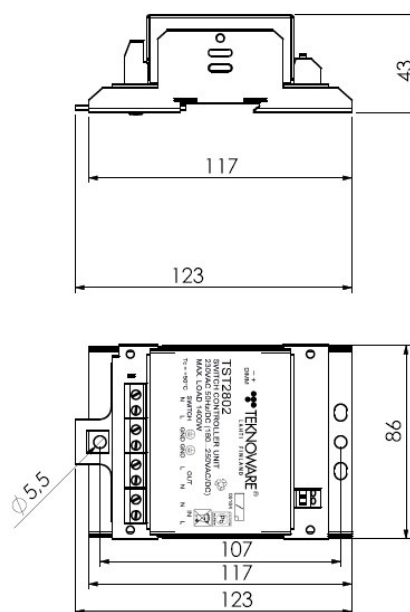
TST2800

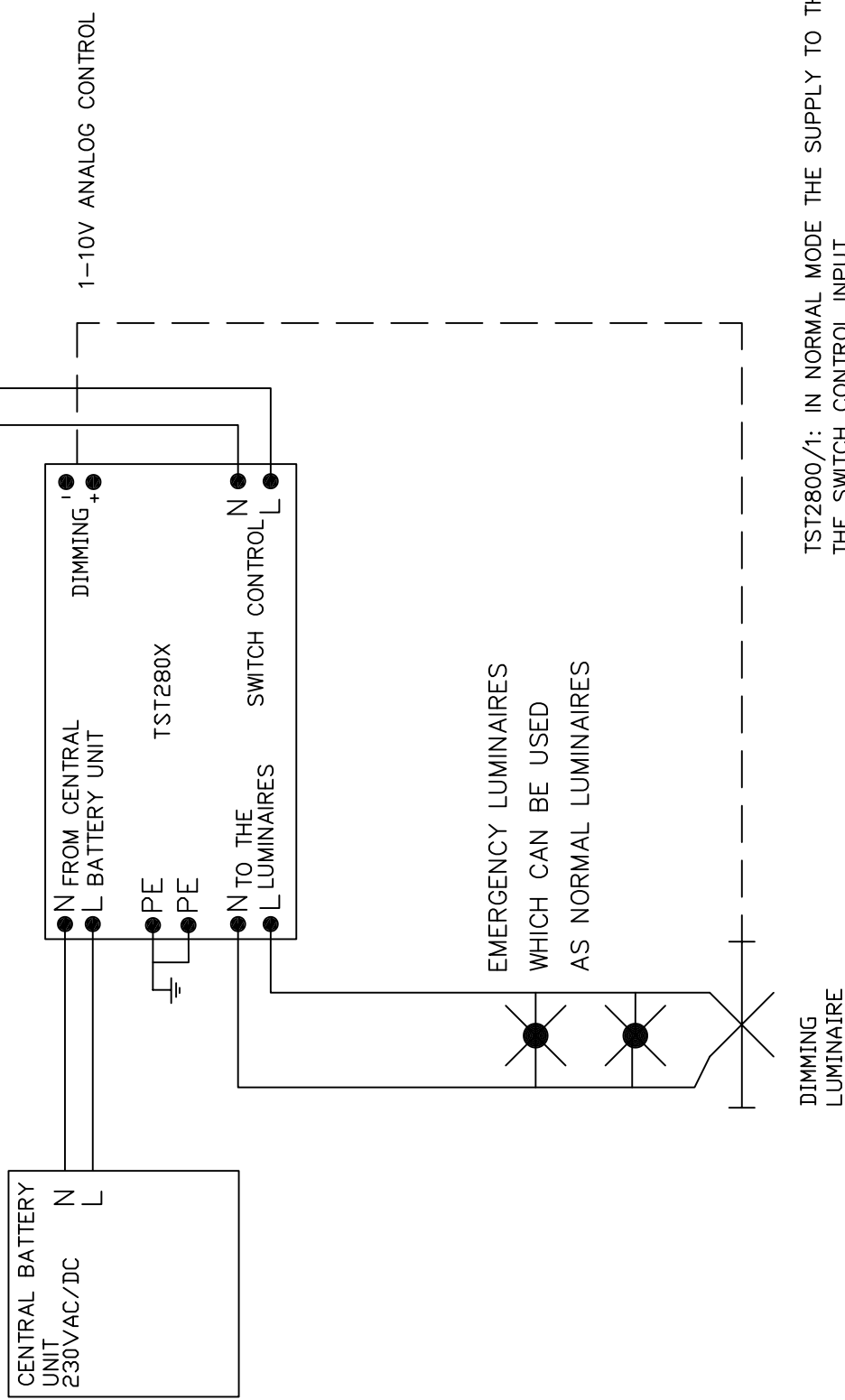


TST2803



TST2802

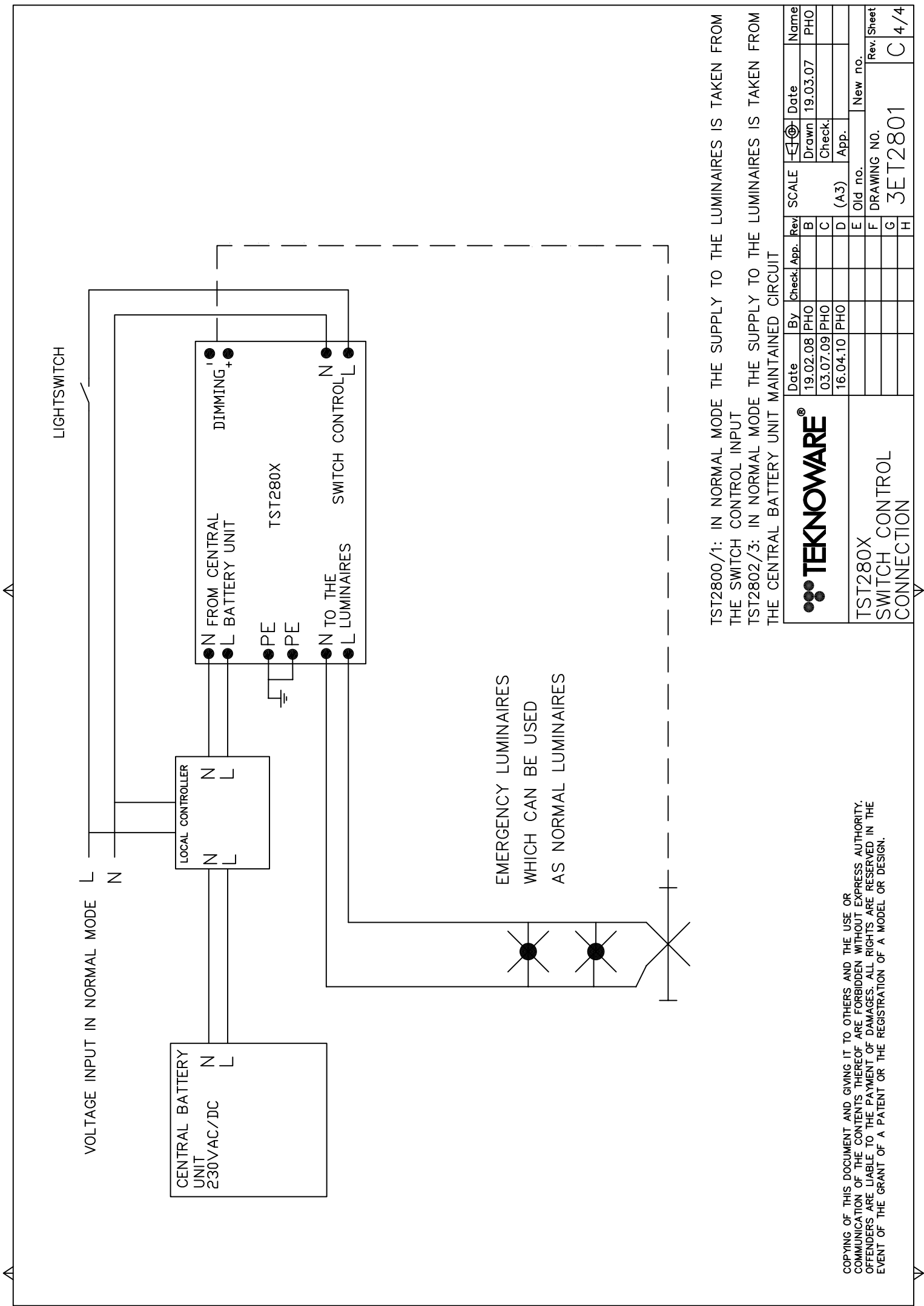




TST2800/1: IN NORMAL MODE THE SUPPLY TO THE LUMINAIRES IS TAKEN FROM THE SWITCH CONTROL INPUT
 TST2802/3: IN NORMAL MODE THE SUPPLY TO THE LUMINAIRES IS TAKEN FROM THE CENTRAL BATTERY UNIT MAINTAINED CIRCUIT

		Date	By	Check	App.	Rev	SCALE	<input type="checkbox"/>	Date	Name
		19.02.08	PHO			B		Drawn	19.03.07	PHO
TST280X SWITCH CONTROL CONNECTION						C		Check		
						D	(A3)	App.		
						E	Old no.		New no.	
						F	DRAWING NO.		Rev.	Sheet
						G	3ET2801			
						H				C

COPYING OF THIS DOCUMENT AND GIVING IT TO OTHERS AND THE USE OR COMMUNICATION OF THE CONTENTS THEREOF ARE FORBIDDEN WITHOUT EXPRESS AUTHORITY. OFFENDERS ARE LIABLE TO THE PAYMENT OF DAMAGES. ALL RIGHTS ARE RESERVED IN THE EVENT OF THE GRANT OF A PATENT OR THE REGISTRATION OF A MODEL OR DESIGN.



LIGHTSWITCH

VOLTAGE INPUT IN NORMAL MODE

CENTRAL BATTERY UNIT
230VAC/DC

LOCAL CONTROLLER

FROM CENTRAL BATTERY UNIT
DIMMING
TST280X
TO THE LUMINAIRES
SWITCH CONTROL

EMERGENCY LUMINAIRES WHICH CAN BE USED AS NORMAL LUMINAIRES

TST2800/1: IN NORMAL MODE THE SUPPLY TO THE LUMINAIRES IS TAKEN FROM THE SWITCH CONTROL INPUT
TST2802/3: IN NORMAL MODE THE SUPPLY TO THE LUMINAIRES IS TAKEN FROM THE CENTRAL BATTERY UNIT MAINTAINED CIRCUIT

		Date	By	Check	App.	Rev	SCALE	Date	Name
		19.02.08	PHO			B		19.03.07	PHO
		03.07.09	PHO			C			
		16.04.10	PHO			D	(A3)		
TST280X SWITCH CONTROL CONNECTION						E	Old no.	New no.	Rev. Sheet
						F	DRAWING NO.		
						G	3ET2801		C
						H			4/4

COPYING OF THIS DOCUMENT AND GIVING IT TO OTHERS AND THE USE OR COMMUNICATION OF THE CONTENTS THEREOF ARE FORBIDDEN WITHOUT EXPRESS AUTHORITY. OFFENDERS ARE LIABLE TO THE PAYMENT OF DAMAGES. ALL RIGHTS ARE RESERVED IN THE EVENT OF THE GRANT OF A PATENT OR THE REGISTRATION OF A MODEL OR DESIGN.