

# TST8102 WEBCM USER GUIDE

## TABLE OF CONTENTS

1. Overview.....	3
2. Installation .....	3
2.1 Network Settings .....	4
3. Index page .....	5
4. Status page .....	6
5. Circuits page .....	6
6. Log File page .....	7
7. Tests page .....	8
8. Settings .....	8
8.1 Central Battery Unit subpage .....	8
8.2 Add User subpage .....	10
8.3 Delete User subpage .....	11
8.4 Network Settings subpage .....	12
8.5 Email Settings subpage.....	13
9. Files page .....	14
9.1 Translating the User Interface.....	15
9.2 Name File.....	15

## 1. Overview

Teknoware TST8102 Web Central Monitoring (WebCM) system is an easy-to-use remote monitoring solution for Central Battery Units (CBUs). Each CBU is equipped with a web server module and assigned with an IP address which can be accessed simply with a web browser. Using the interface via a web browser is easy, and does not require any special skills.

The user interface is protected with usernames and passwords. There are three different user levels to allow access for different kind of users. The user levels are:

### 1. Basic user

- can only access the status and circuit pages and read the log file.

### 2. Advanced user

- can also run tests.

### 3. Administrator user

- has full control (Network settings, CBU settings, user management, language and name file access).

The maximum number of users is ten, and only one user can be logged in at a time. When a higher-level user is logged in, current lower level login is denied. If the user interface is not used for ten minutes, the user is logged out automatically. It is recommended to remain logged out when not using the system.

## 2. Installation

To use the browser interface, a TST8102 communication board needs to be installed on each CBU. The communication board is connected to the internal bus of the CBU, and to an Ethernet network. It is also possible to connect the board directly to a PC via the Ethernet connector (see *Figure 1: Communication board*). The TST2701 DC Power Supply Unit is used to power up the board (5V).

If the communication board is not pre-installed, see a separate guide for TST8102 Installation.

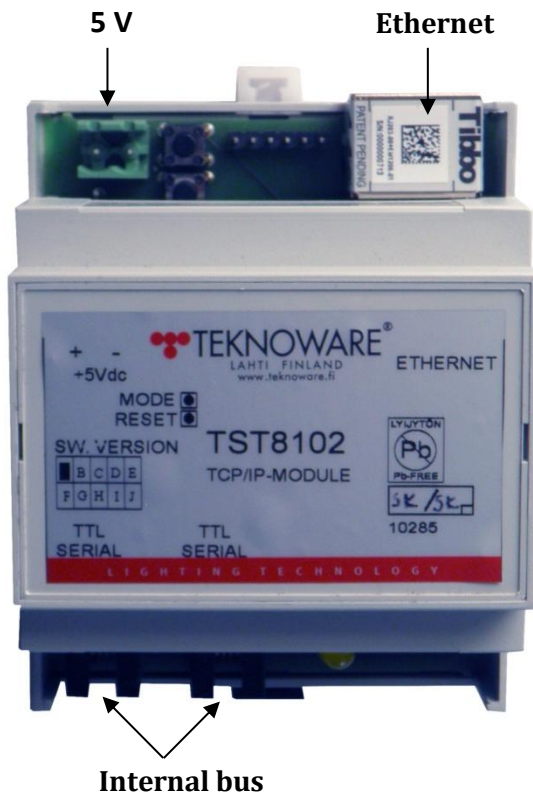


Figure 1. Communication board

## 2.1 Network Settings

The communication boards are pre-configured with default factory settings. When installing the system, these settings need to be reconfigured. The default IP address is 10.0.0.2, and the net mask is 255.255.255.0. To define the network settings, connect <http://10.0.0.2/index.html> with a web browser. Please note that your computer IP address has to be from same network segment (contact your network administrator if needed). For more information about the network settings, see Chapter 8.4 *Network Settings subpage*.

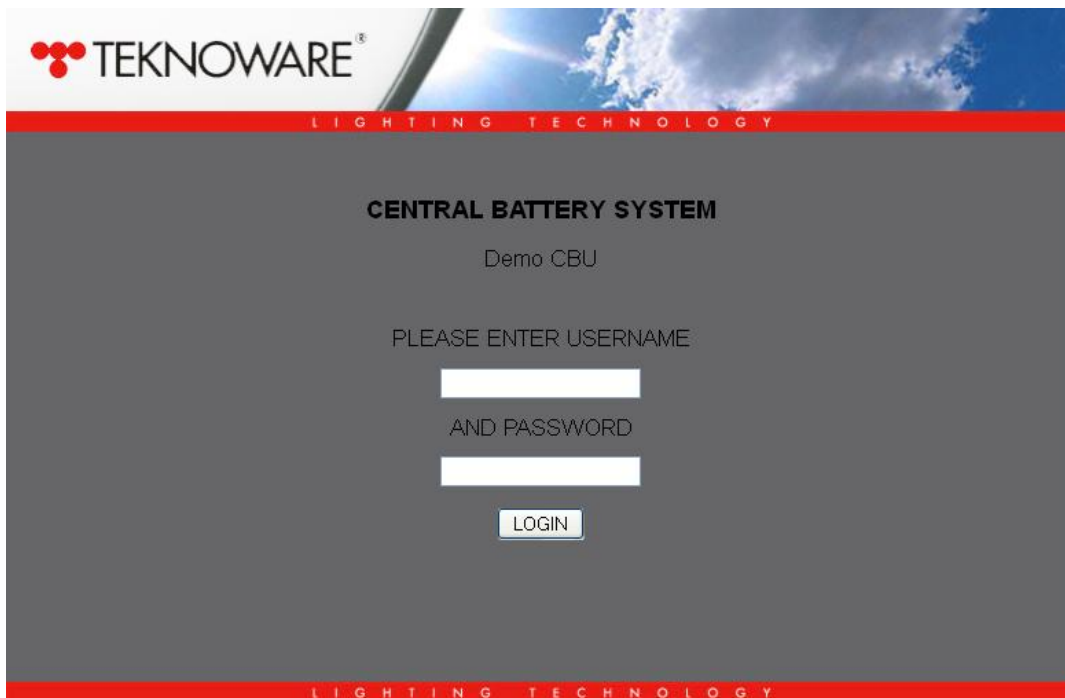
### NOTE!

*Make sure that IP address 10.0.0.2 is available in your local network. If the system includes more than one TST8102 communication board, connect the boards to the network one by one and define a unique IP address for each board before connecting the next to the system. This is done to avoid overlapping IP addresses.*

### 3. Index page

Connect address [http://your\\_module\\_address/index.html](http://your_module_address/index.html) (for example 10.0.0.2/index.html) with a web browser. The Index page is displayed, with the name of the CBU and login fields. Enter username and password to login.

**Default settings are:** username “**admin**”, password “**admin**”



*Figure 2. Index page*

After logging in, the system opens the Status page. The other pages of the user interface can be accessed by clicking the corresponding page from the navigation bar (*Figure 3: Status page*). The content of the navigation bar depends on the user level.

## 4. Status page

After logging in, the system automatically opens the Status page. The Status page contains general information about the status of the CBU such as possible errors.

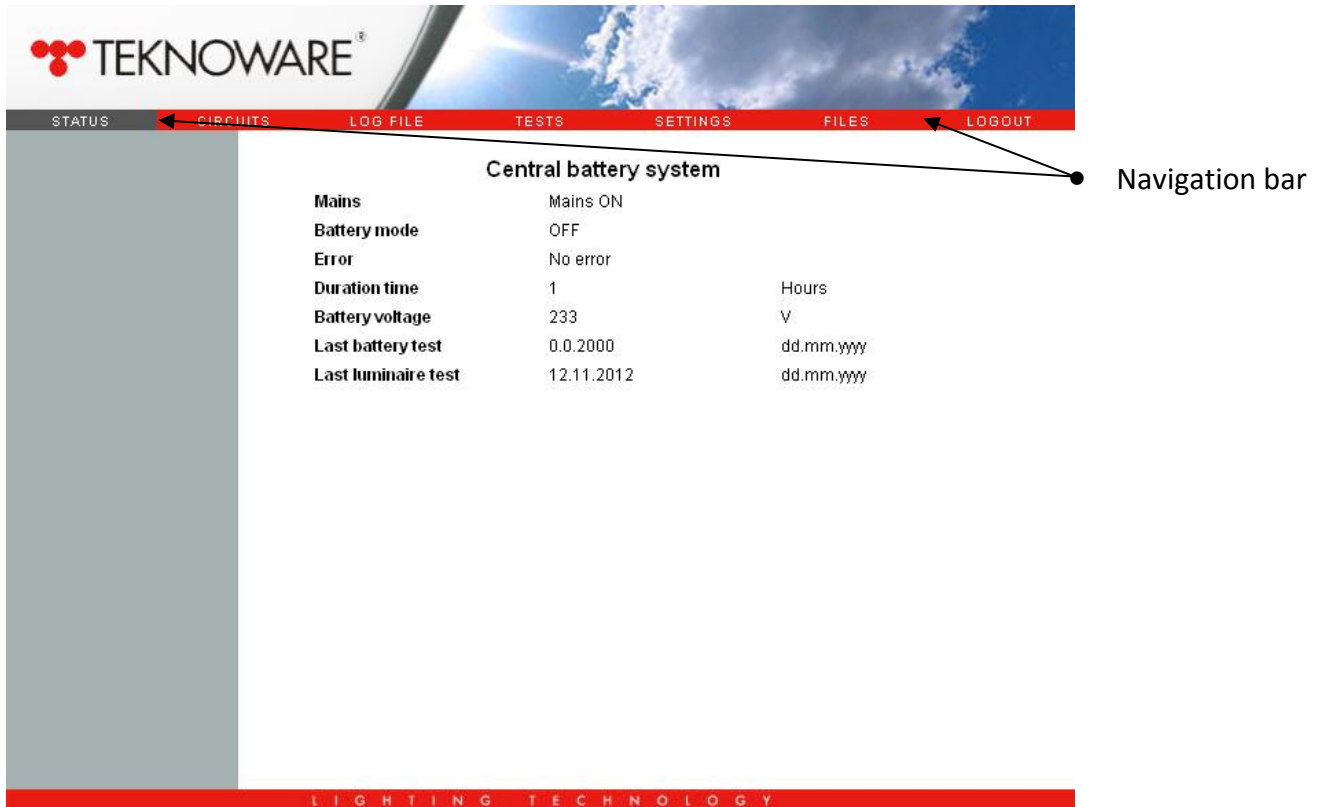


Figure 3. Status page

## 5. Circuits page

The Circuits page contains information about the circuits and connected luminaires. Each circuit with a connected luminaire/luminaires are listed in the left bar (*Figure 4: Circuits page, arrow A*), and a list of luminaires for the currently selected circuit is displayed in the main window. If any errors were found during the last luminaire test, a red **“ERROR”** text is shown in the left column, beside the corresponding circuit. The faulty luminaire can be identified from the list of luminaires (*Figure 4: Circuits page, arrow B*).

It is also possible to display the luminaires' names in the list of luminaires. For more information about the name file, see chapter 9.2 *Name File*.

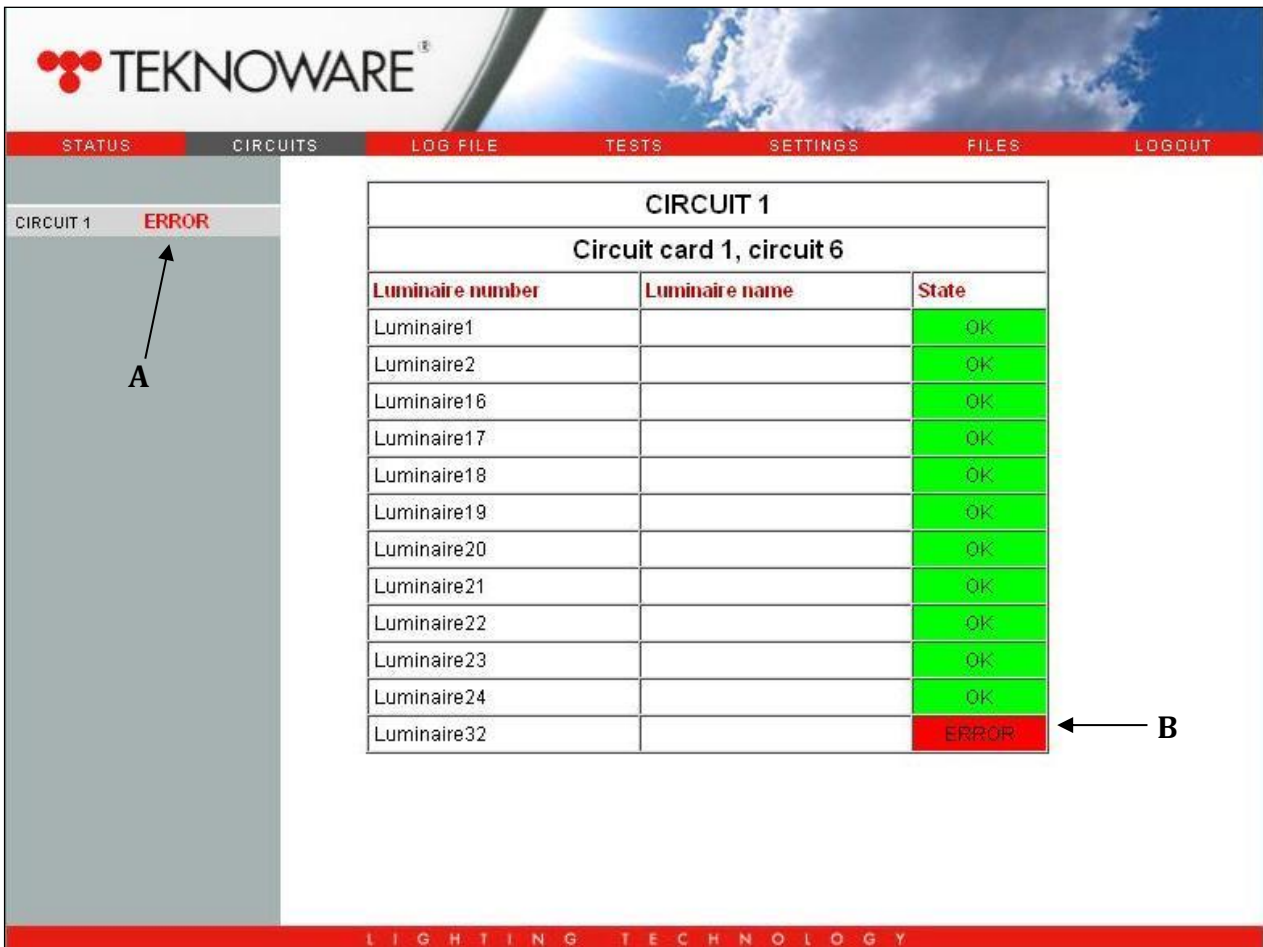


Figure 4. Circuits page

## 6. Log File page

The module saves information about performed tests to a log file, which can be downloaded from the navigation bar. The Log file is a general text file, which can be opened with most text editors (e.g. Notepad in Windows operating system). It is recommended to save the log file occasionally to the hard drive or to a removable drive.

## 7. Tests page

The Tests page contains buttons to perform luminaire or battery tests manually. It is recommended to use the automatic tests.

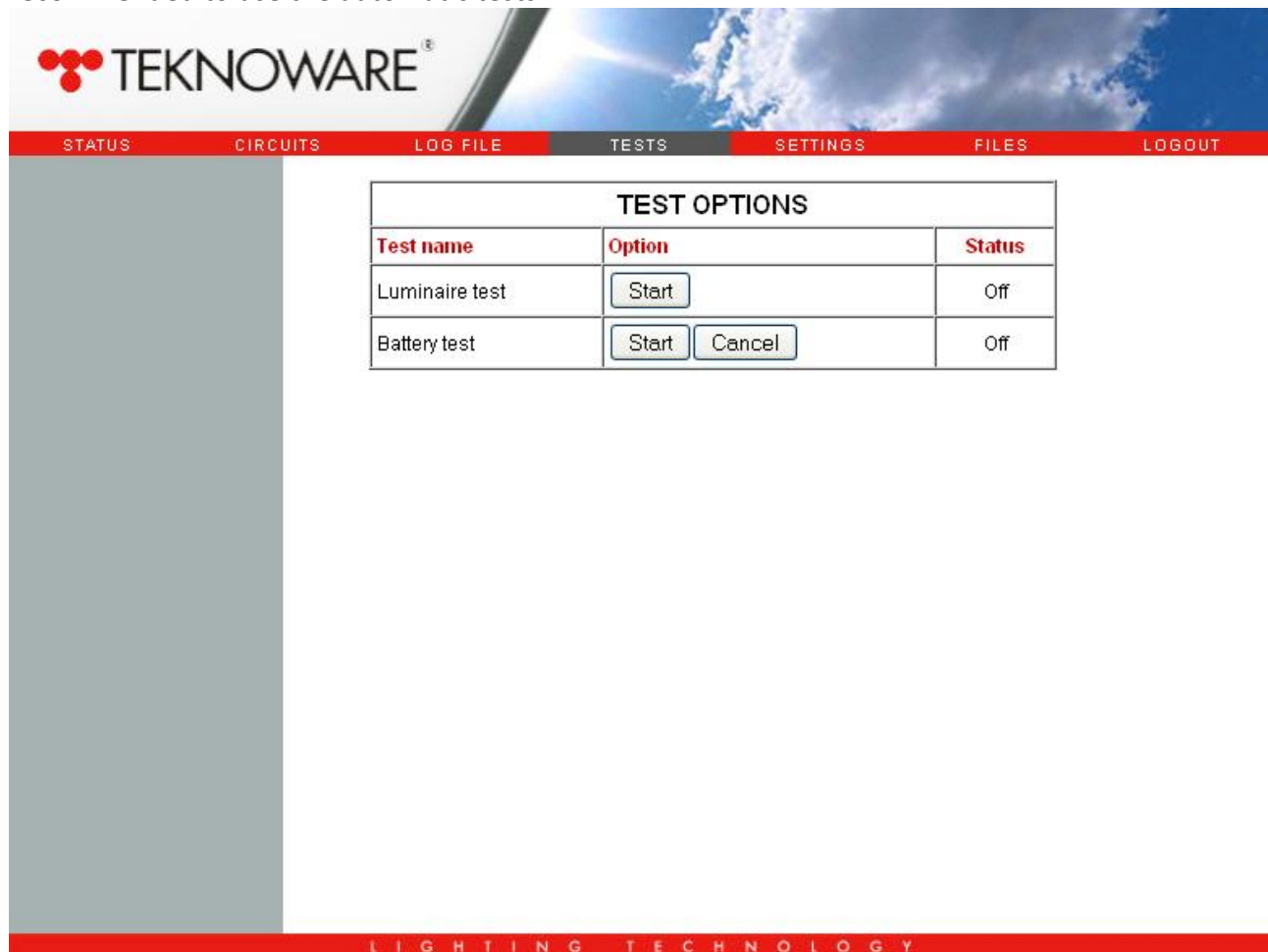


Figure 5. Tests page

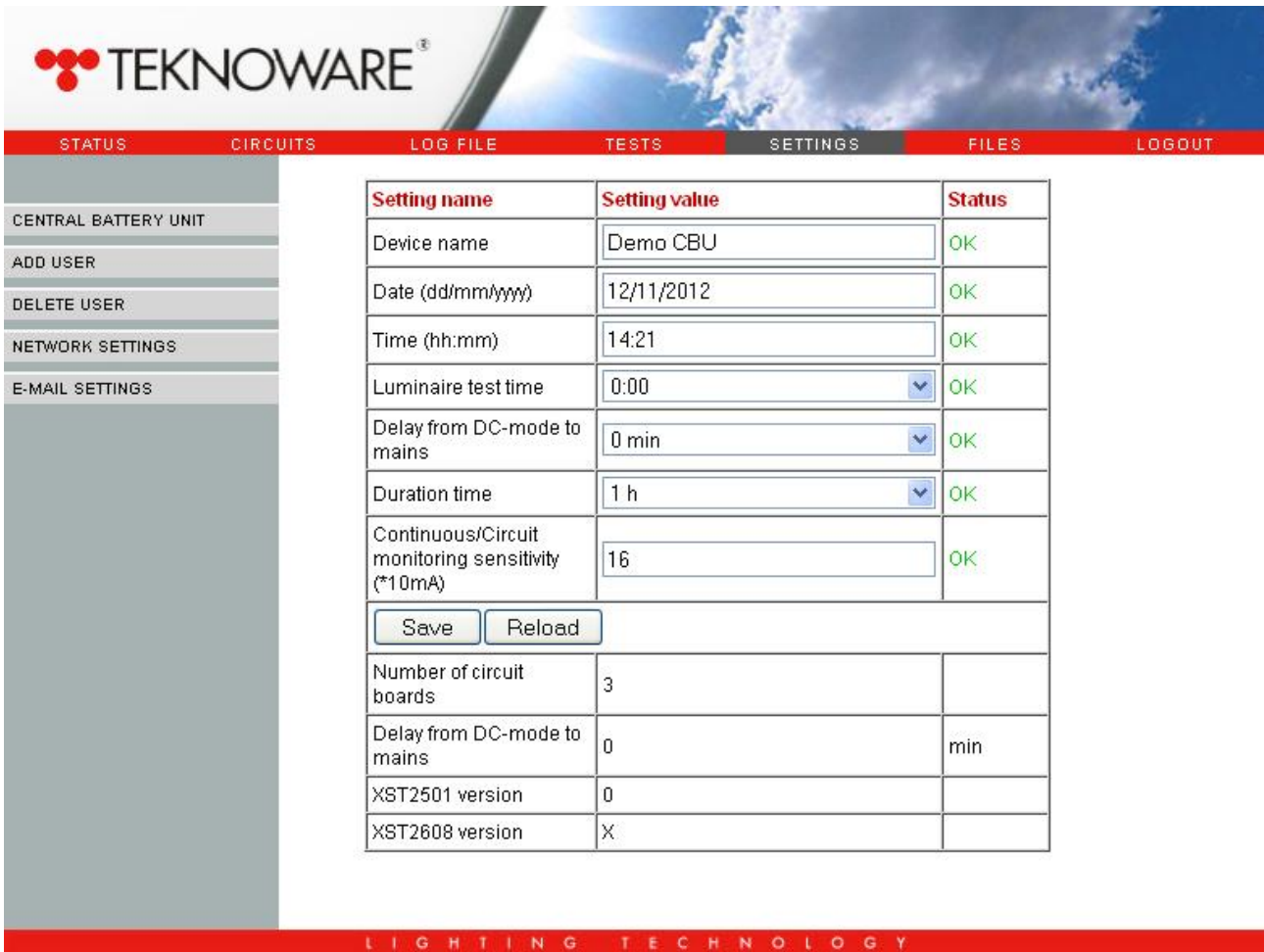
## 8. Settings

Module configurations can be made from the Settings page. This page contains user management, network settings and central battery unit settings. Navigate between different setting subpages by clicking the corresponding page from the left bar.

### 8.1 Central Battery Unit subpage

CBU settings can be changed from this subpage (*Figure 6: Central battery unit settings*). Clicking the Save button writes the changes to the CBU internal memory. The “Device name” setting is related to web server interface and is only written to the web server module. “Device name” is displayed in the title of the web browser (*Figure 7: Device name in the title, arrow A*). Central battery units can be identified more easily if the Device name is set for every module.





Setting name	Setting value	Status
Device name	Demo CBU	OK
Date (dd/mm/yyyy)	12/11/2012	OK
Time (hh:mm)	14:21	OK
Luminaire test time	0:00	OK
Delay from DC-mode to mains	0 min	OK
Duration time	1 h	OK
Continuous/Circuit monitoring sensitivity (*10mA)	16	OK
<input type="button" value="Save"/> <input type="button" value="Reload"/>		
Number of circuit boards	3	
Delay from DC-mode to mains	0	min
XST2501 version	0	
XST2608 version	X	

Figure 6. Central battery unit settings

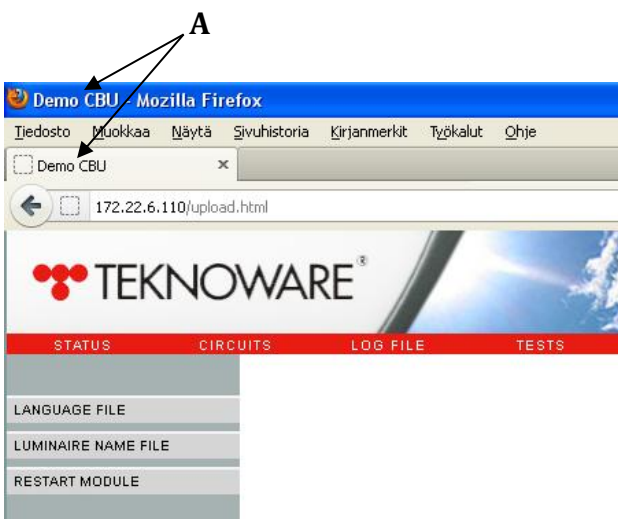
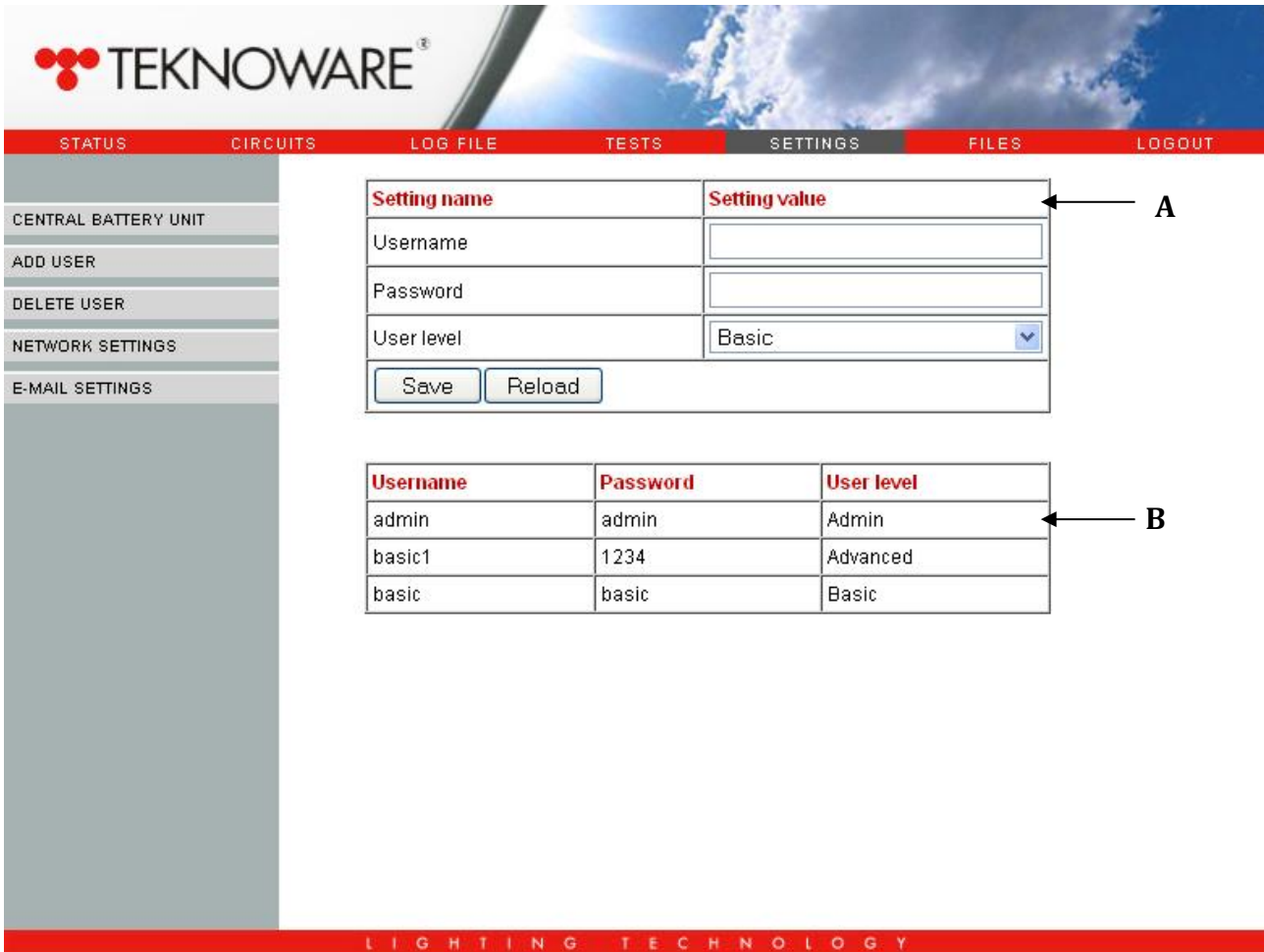


Figure 7. Device name in the title

## 8.2 Add User subpage

User accounts can be added from the Add user subpage. Simply write the new username and password to the corresponding fields (*Figure 8: Add user subpage, arrow A*) and click Save. All the user accounts are listed in the lower table (*Figure 8: Add user subpage, arrow B*). Adding a user account that already exists will overwrite the old account. When the maximum number of accounts (10) is reached, new accounts cannot be added without first deleting old ones.



Setting name	Setting value
Username	<input type="text"/>
Password	<input type="password"/>
User level	Basic <input type="button" value="v"/>
<input type="button" value="Save"/> <input type="button" value="Reload"/>	

Username	Password	User level
admin	admin	Admin
basic1	1234	Advanced
basic	basic	Basic

Figure 8. Add user subpage

### 8.3 Delete User subpage

User accounts can be removed from the Delete user subpage. To delete a user account, simply select an account from the drop-down list (*Figure 9: Delete user subpage, arrow A*), and click Delete. The user accounts are listed in the table (*Figure 9: Delete user subpage, arrow B*).

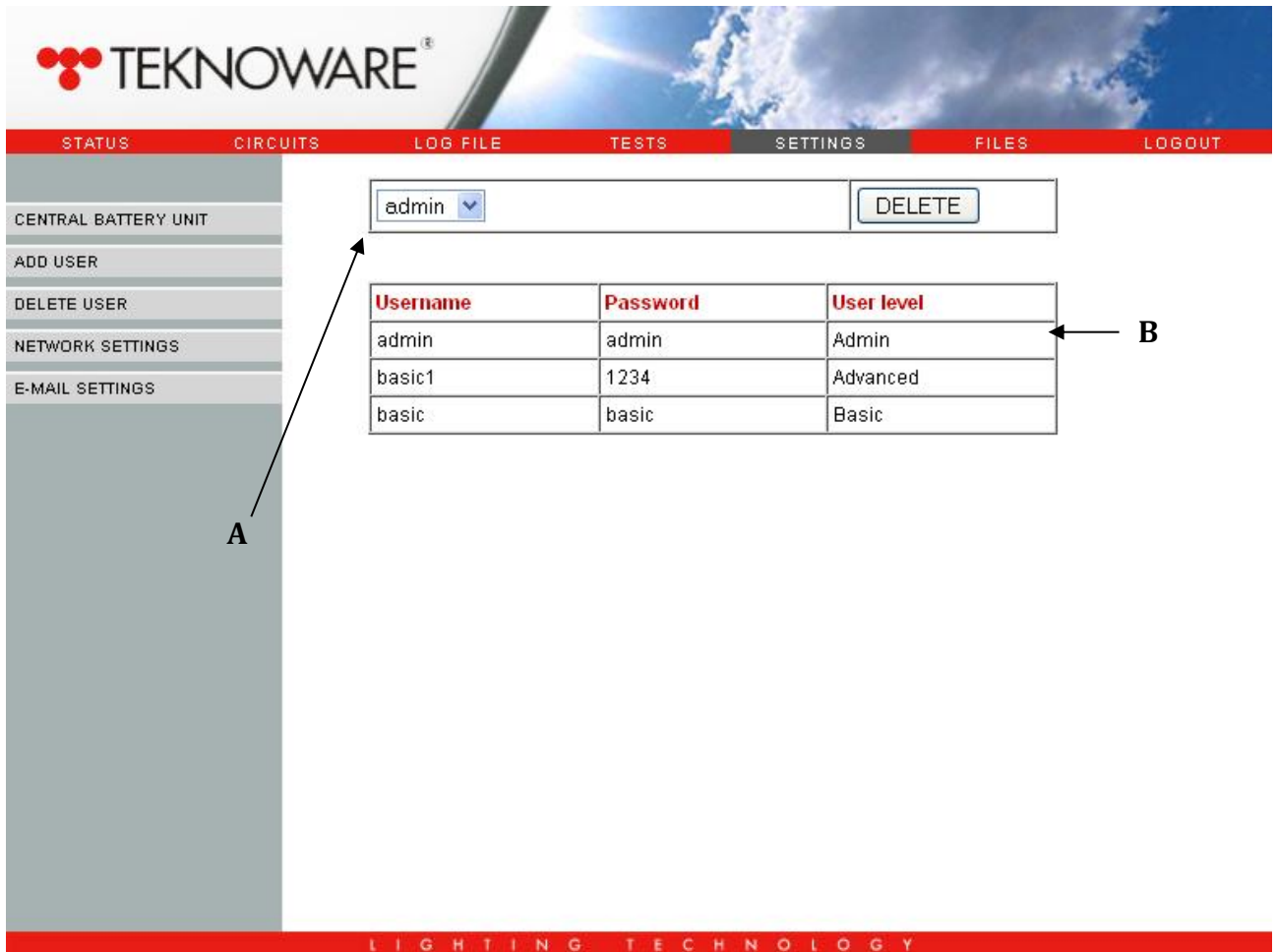


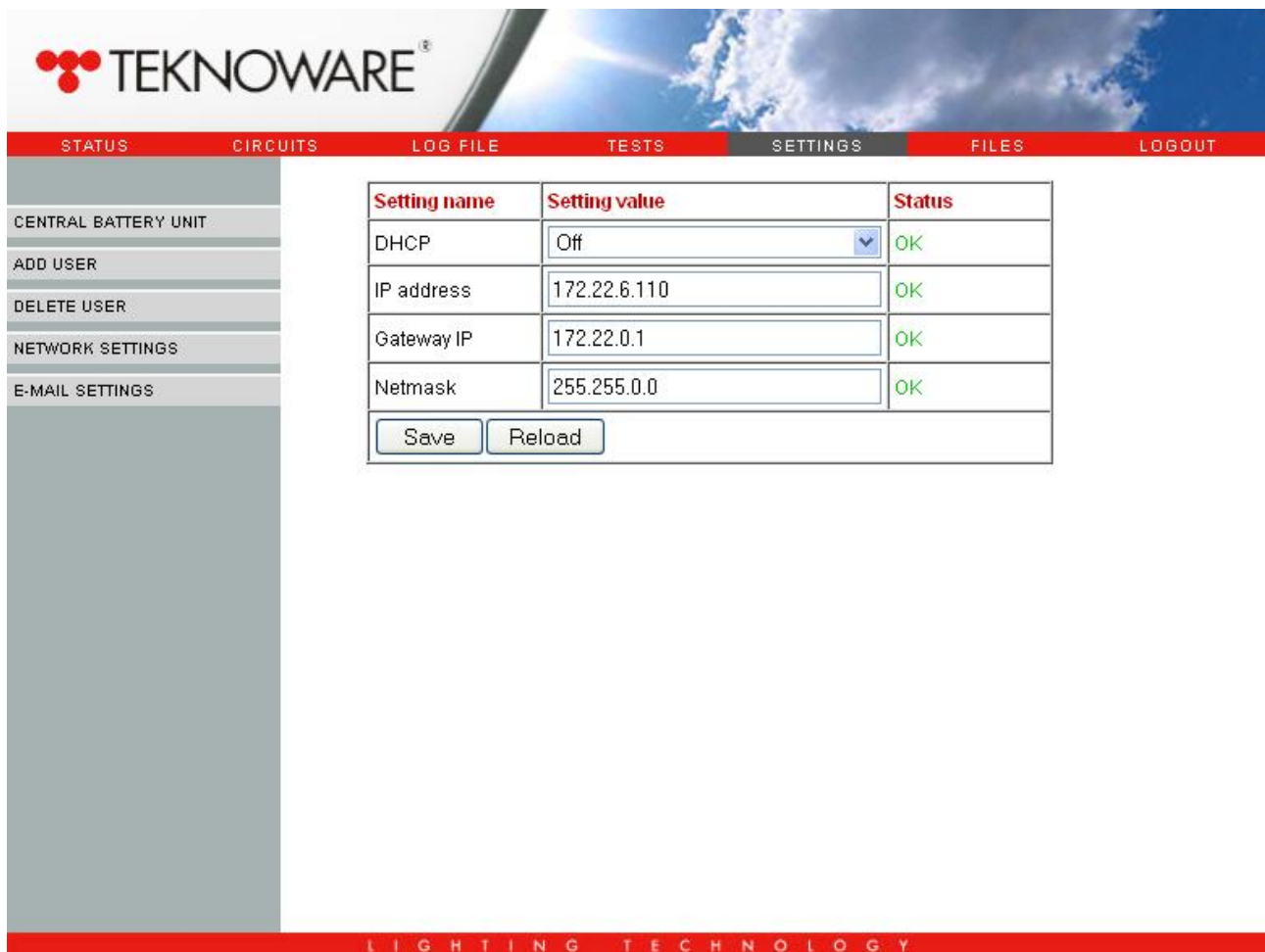
Figure 9. Delete user subpage

## 8.4 Network Settings subpage

The Network settings can be configured from this subpage. It is possible to use DHCP configuration or static IP configuration. New network configuration requires restarting the module to take effect.

### NOTE!

*Ask for the appropriate network configuration details from your network administrator. Typically network settings are not changed after installation.*



Setting name	Setting value	Status
DHCP	Off	OK
IP address	172.22.6.110	OK
Gateway IP	172.22.0.1	OK
Netmask	255.255.0.0	OK

Save Reload

Figure 10. Network settings subpage

## 8.5 Email Settings subpage

WebCM system has an automatic email notification function, which can be configured and enabled from this subpage.

To enable / disable email notifications, simply choose the correct option from the drop down list (*Figure 11: Email settings subpage, arrow A*).

To set up an email address for the function, write a valid email address or addresses on the corresponding fields (*Figure 11: Email settings subpage, arrow B*).

When the email setup is done, click Save. The system will now send an email notification whenever a new error state is identified.

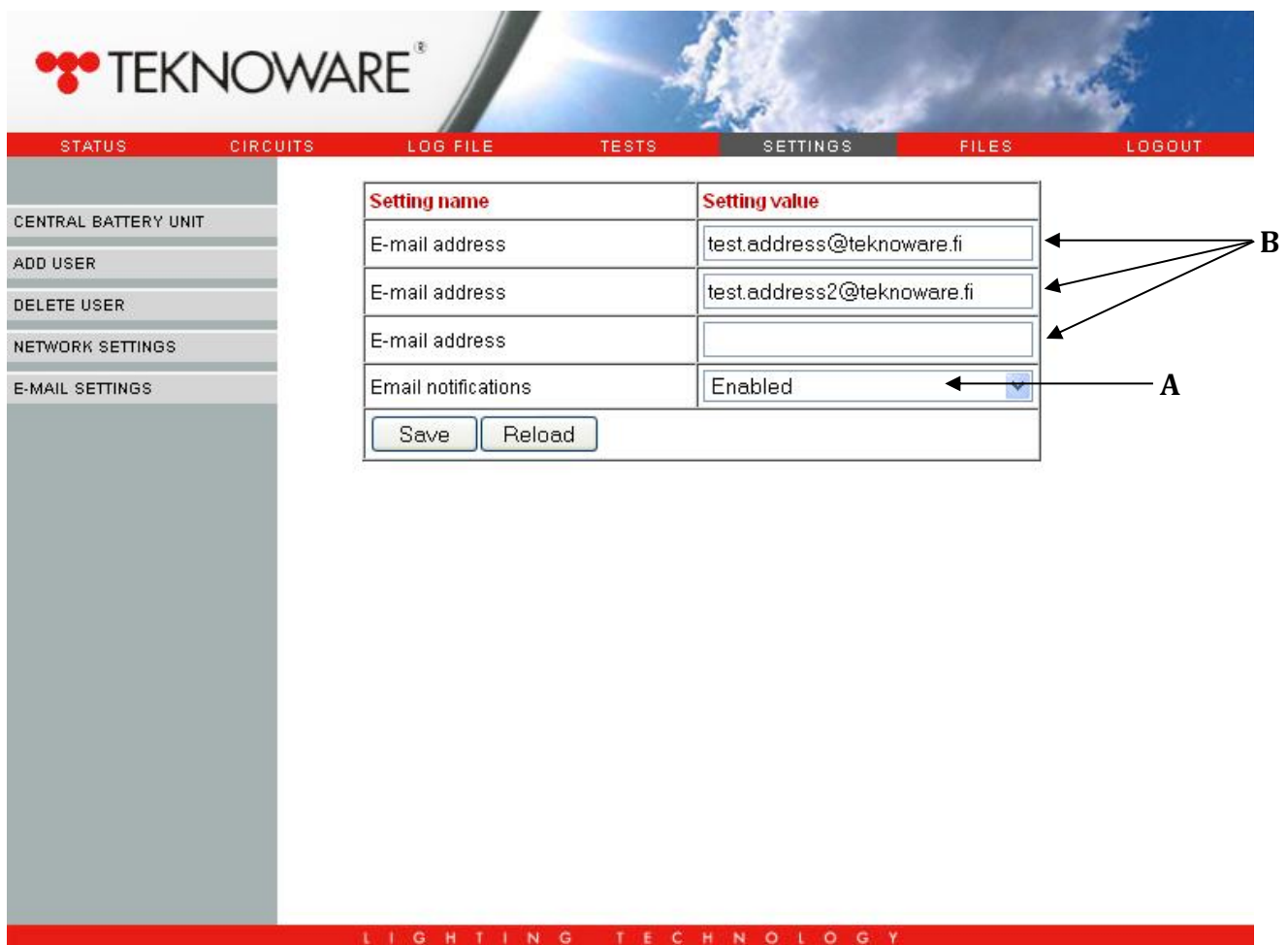


Figure 11. Email settings subpage

## 9. Files page

The module includes two different files, which can be edited by the user:

### 1. Language file (arrow A)

All the label texts displayed in the web interface are loaded from this file. By modifying this file it is possible to translate the user interface into different languages easily.

### 2. Name file (arrow B)

This file contains the luminaire name information that is shown in the Circuits page. The name information can be loaded to the module from here.

After changing either of the files, the module needs to be restarted by clicking the Restart Module (arrow C) in order for the changes to take effect.

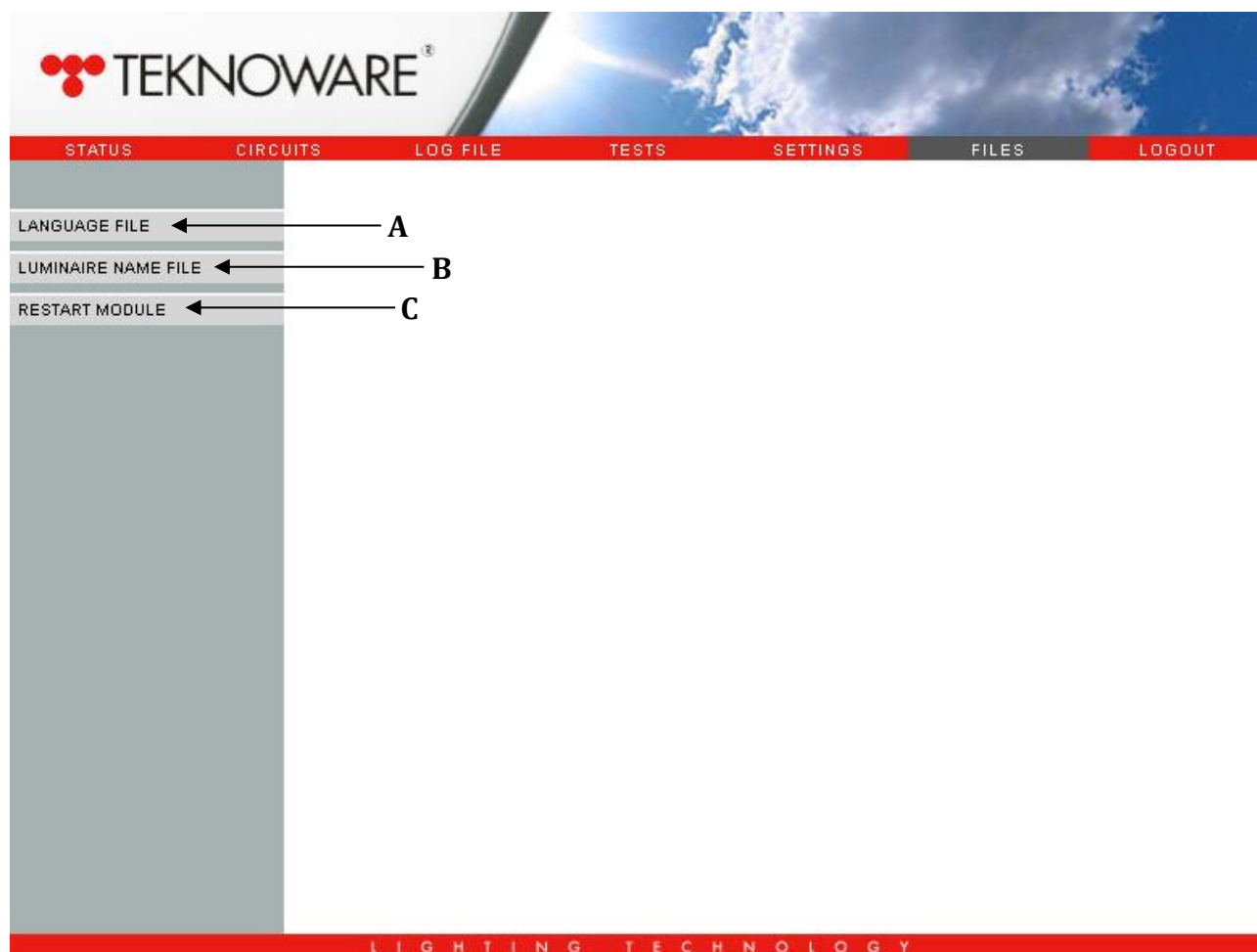


Figure 12. Files page

## 9.1 Translating the User Interface

1. Download the Language file from the module (*Figure 13: Downloading and uploading Language file, arrow A*).
2. Make a backup copy of the original file
3. Translate the file
4. Upload the translated file back to the module (*Figure 13: Downloading and uploading Language file, arrow B*).

The Language file is a plain text file, and can be edited with any text editor such as MS Notepad. The system needs to be restarted for the new Language file to take effect.



Figure 13. Downloading and uploading Language file

### NOTE!

Due to memory saving reasons the language file rows are limited to 30 characters. Do not change text placements or file layout!

## 9.2 Name File

Uploading a name file to the module is a similar process as changing the language file, but "LCD-config" software is needed to create the file. To get the software please contact [emexit@teknoware.fi](mailto:emexit@teknoware.fi).

### NOTE!

When uploading a file to the module check carefully that you select the right file. Uploading a name file on language file selection or vice versa may be harmful.

## Contact information:

**Teknoware Oy**, Ilmarisentie 8, FI-15200 Lahti, Tel: +358 (0)3 883 020, Fax: +358 (0)3 8830 260, Email: [emexit@teknoware.fi](mailto:emexit@teknoware.fi), [www.teknoware.fi](http://www.teknoware.fi)



Emergency lighting unit	Telephone	Email
Export Manager Mr Simo Kurki	+358 (0)3 883 0178	<a href="mailto:emexit@teknoware.fi">emexit@teknoware.fi</a>
Area Manager Mr Pasi Hongisto	+358 (0)3 883 0233	<a href="mailto:simo.kurki@teknoware.fi">simo.kurki@teknoware.fi</a> <a href="mailto:pasi.hongisto@teknoware.fi">pasi.hongisto@teknoware.fi</a>

After Sales	Telephone	Email
after sales service, technical assistance, After Sales Manager Mr Markus Laurell	+358 (0)3 883 0186	<a href="mailto:aftersales@teknoware.fi">aftersales@teknoware.fi</a>